

Experience the beauty of spring in South Somerset



Nature is awakening in all its splendour and there's no better place than our corner of Somerset to marvel at its wild beauty.

Bursting into Bloom

Vibrant colour fills every corner of the county with an abundance of historic houses, gardens, woodlands and country parks to discover.

East Lambrook Manor Gardens is an English Heritage Grade 1 listed garden and characterised by many winding paths through abundant borders and is renowned as the premier example of the English cottage garden style. It has noted collections of snowdrops, hellebores and hardy geraniums and be sure to pop into their excellent specialist hardy plant nursery in the garden.

The Newt in Somerset offers daily morning Garden Tours as part of your admission (membership applies). An experienced gardener will guide you through the vast collections of planted spaces and explain the different gardening styles through the ages, whilst stopping to pick, taste, smell and touch the different fruit and veg on offer.

You've hit the jackpot if you're a National Trust member in South Somerset; **Montacute House, Tintinhull Garden, Lytes Cary Manor** and **Barrington Court** are all near to one another, bursting with life in spring, with many offering great Easter activities too.

Opportunities to enjoy extraordinary and noteworthy gardens in the Somerset area are plentiful; **Forde Abbey House & Gardens, Hauser & Wirth Somerset, Hestercombe Gardens, The Bishop's Palace & Gardens** and **The Walled Gardens of Cannington** are all worth a visit too.

Visit our website for more information: www.visitsouthsomerset.com/listings/gardens-and-historic-houses



Chard Reservoir Local Nature Reserve

Go Wild in the Great Outdoors

Lose yourself in landscapes at **Ham Hill Country Park** and listen to the skylarks as they prepare to nest on the flat fields. In early spring, the woodland floors are a sea of yellow when the lesser celandines are the first flowers to emerge, closely followed by wood anemones and violets, and then in April a carpet of beautiful bluebells.

Enjoy the symphony of birdsong in **Yeovil Country Park's** woodlands and see if you can spot the return of the nesting pair of swans. Keep an eye out for the elusive Kingfishers too.

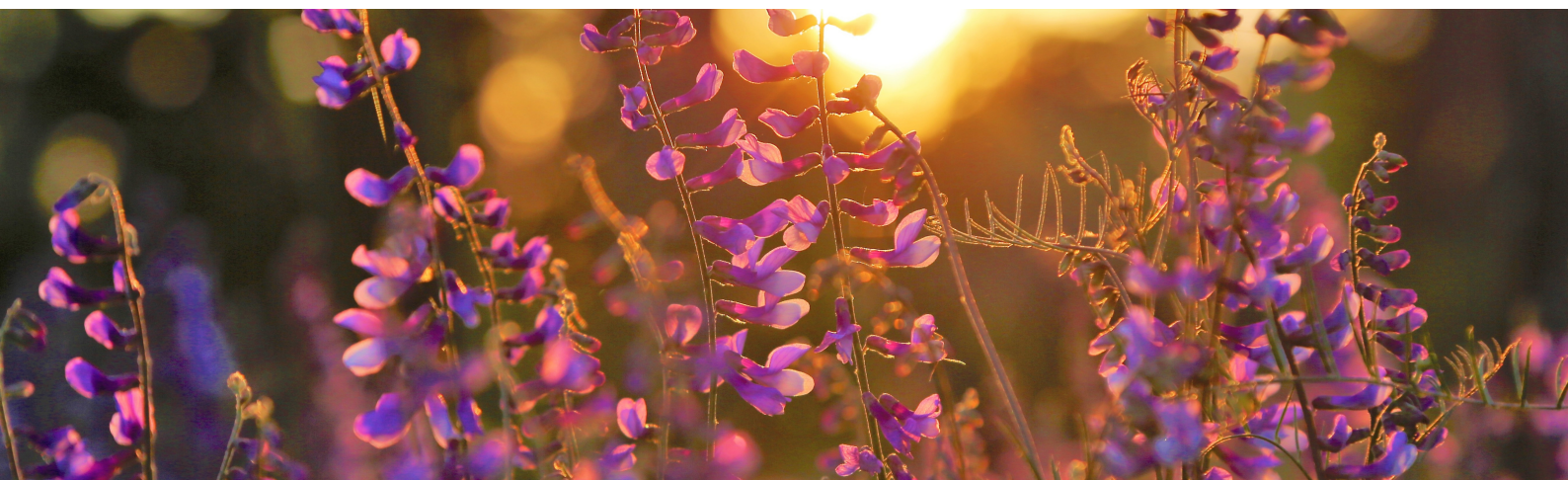
Chard Reservoir Local Nature Reserve is a fantastic site for bird watching and walking, following wildflower meadows through to the woodland edge surrounding the expanse of open water with spectacular scenery. Kids love the woodland play area too.

The rangers organise some great activities throughout the year, particularly in the school holidays, from den building, bird trails, geocaching and pottery to fairy door painting! Keep a look out for the rangers' latest events on our Visit South Somerset website.

www.visitsouthsomerset.com/listings/countryside-nature-and-wildlife

RSPB Swell Wood is magical in springtime; keep an eye out for nesting grey herons, while bluebells, primroses and orchids burst into life in the woodland. It's full of birdsong too, including chiffchaffs, blackcaps, marsh tits and song thrushes. Discover more by visiting their website:

www.rspb.org.uk/reserves-and-events/reserves-a-z/swell-wood/





Paddle, Walk, Cycle...

Paddle on the Parrett

With the arrival of warmer and longer days, the River Parrett starts to spring into action. It's a particularly great spot for kayaks and paddleboarding, and **Langport** is a popular and family friendly base, with plenty of parking and space along the river frontage for picnics and launching. For a unique view of the Somerset Levels, you can take a river trip on a restored Dart Ferry from Langport too, **The Duchess of Cocklemoor**, usually starting trips in May. Look out for wildlife including otters and kingfishers, herons and the famous Somerset cranes.

www.langport.life/

www.duchessofcocklemoor.co.uk/

www.thegreatcraneproject.org.uk/

Walking

With acres of scenic countryside and pretty towns and villages to discover you really are spoilt for choice in Somerset; from gentle circular walks to some serious long distance hikes and trails.

The River Parrett Trail is a stunning 50 mile walk that can be enjoyed in easy to follow sections that have all recently been updated and available to download for free on our Visit South Somerset website. There are some fabulous highlights including Ham Hill Country Park, the site of one of Europe's largest Iron Age hill forts, Stoke St Gregory, the heart of the Somerset willow growing and basket making industry, and Burrow Mump and Athelney, where the Saxon King Alfred found a refuge from the Vikings.

www.visitsouthsomerset.com/listings/walking

Cycling

Meander through the Levels at an easy pace or explore the hills for the more energetic. **'Pedalling the Scenic Route'** offers circular cycle rides across the South Somerset Moors, suitable for all abilities and start at Langport. If you need to hire bikes, **Parrett Trail Bikes** in Langport is a friendly local business and if you're looking for something with a bit more electric power, there's **Somerton Electric Bike Rentals** and **Bruton Bike Hire** too.

Sustrans Route 30 runs through the heart of Merriott and past the award winning **Feed Station** café, a firm favourite with cyclists having been voted England's top café for those on two wheels! Discover more here:

www.visitsouthsomerset.com/listings/cycling

www.feedstationmerriott.co.uk





Whatever the weather...

April showers? Not a problem. Bring your wellies and waterproofs and jump in lots of muddy puddles. But if you'd rather stay under cover, then there is plenty here to choose from.

From **Haynes Motor Museum**, the many market town museums such as Chard (the birthplace of modern flight) to the impressive **Fleet Air Arm Museum** at RNAS Yeovilton – the county offers a fantastic range for all tastes, ages and interests. At Fleet, you can climb on board Concorde or visit the deck of an aircraft carrier and there are dozens of much older planes to see too.

There are many indoor activity and leisure centres, including **Chard's impressive new leisure facility**. Soft play centres can be found in Yeovil, Somerton, Chard and Ilminster. **Flip Out** in nearby Wellington is a fantastic trampoline park and **Ready2Climb** in Yeovil is a great indoor climbing centre. Visit our website for ideas and inspiration for things to do to make the most of your time here:

www.visitsouthsomerset.com/listings/things-to-do

Wake up in South Somerset this spring...

There's no better place to immerse yourself in Spring's natural and wild beauty. There are many places to stay for every taste and budget and we're proud to be known for our warm welcome here. Discover cosy country cottages, boutique bolt-holes and unique retreats with stunning views:

www.visitsouthsomerset.com/listings/accommodation

We look forward to welcoming you!



www.visitsouthsomerset.com



01935 829333



visit@southsomerset.gov.uk



[VisitSouthSomerset](https://www.facebook.com/VisitSouthSomerset)



[VisitSSomerset](https://twitter.com/VisitSSomerset)



[visitsouthsomerset](https://www.instagram.com/visitsouthsomerset)

South Somerset Visitor Information Centre, Cartgate Picnic Site A303/A3088, Stoke sub Hamdon TA14 6RA